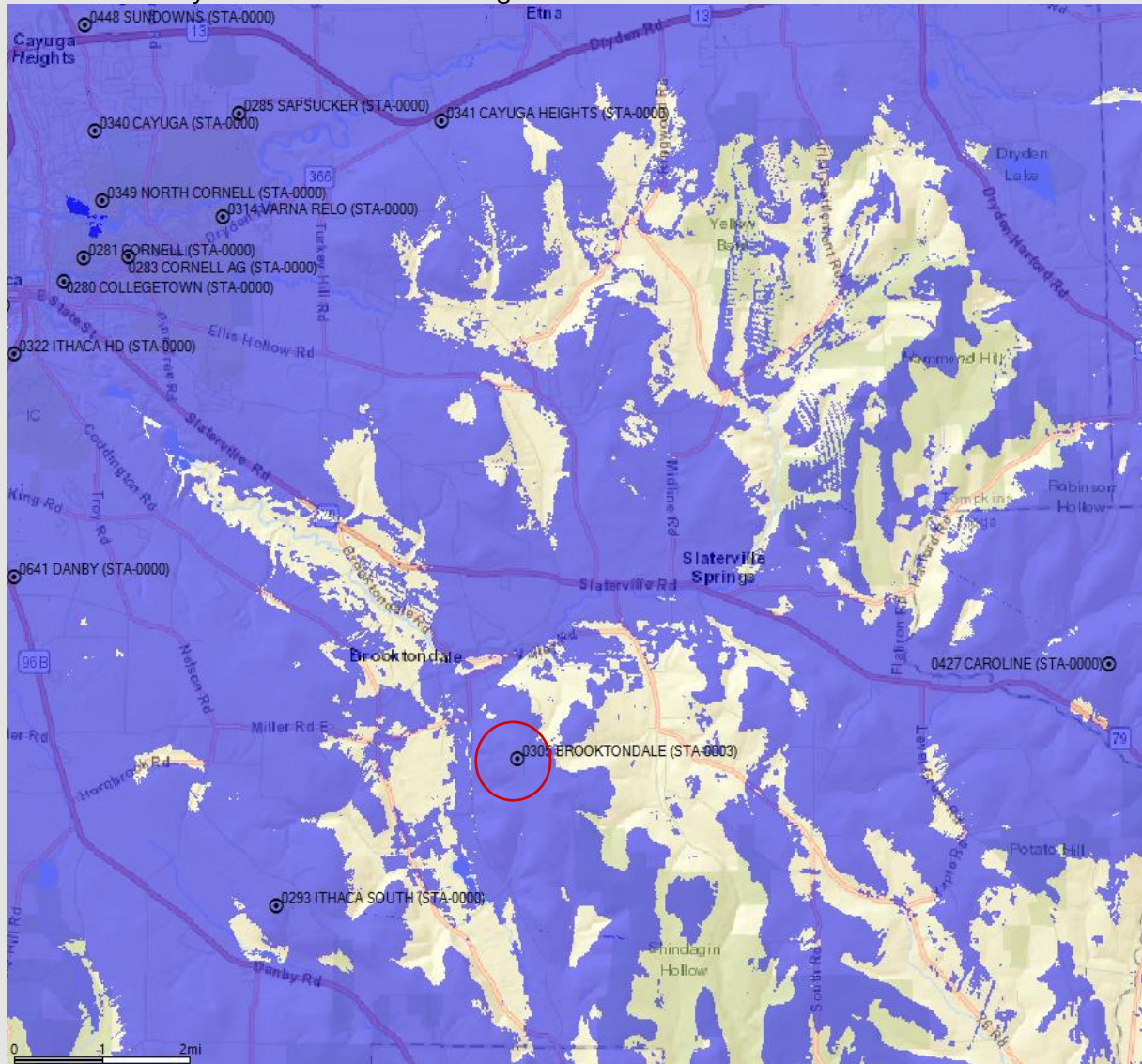


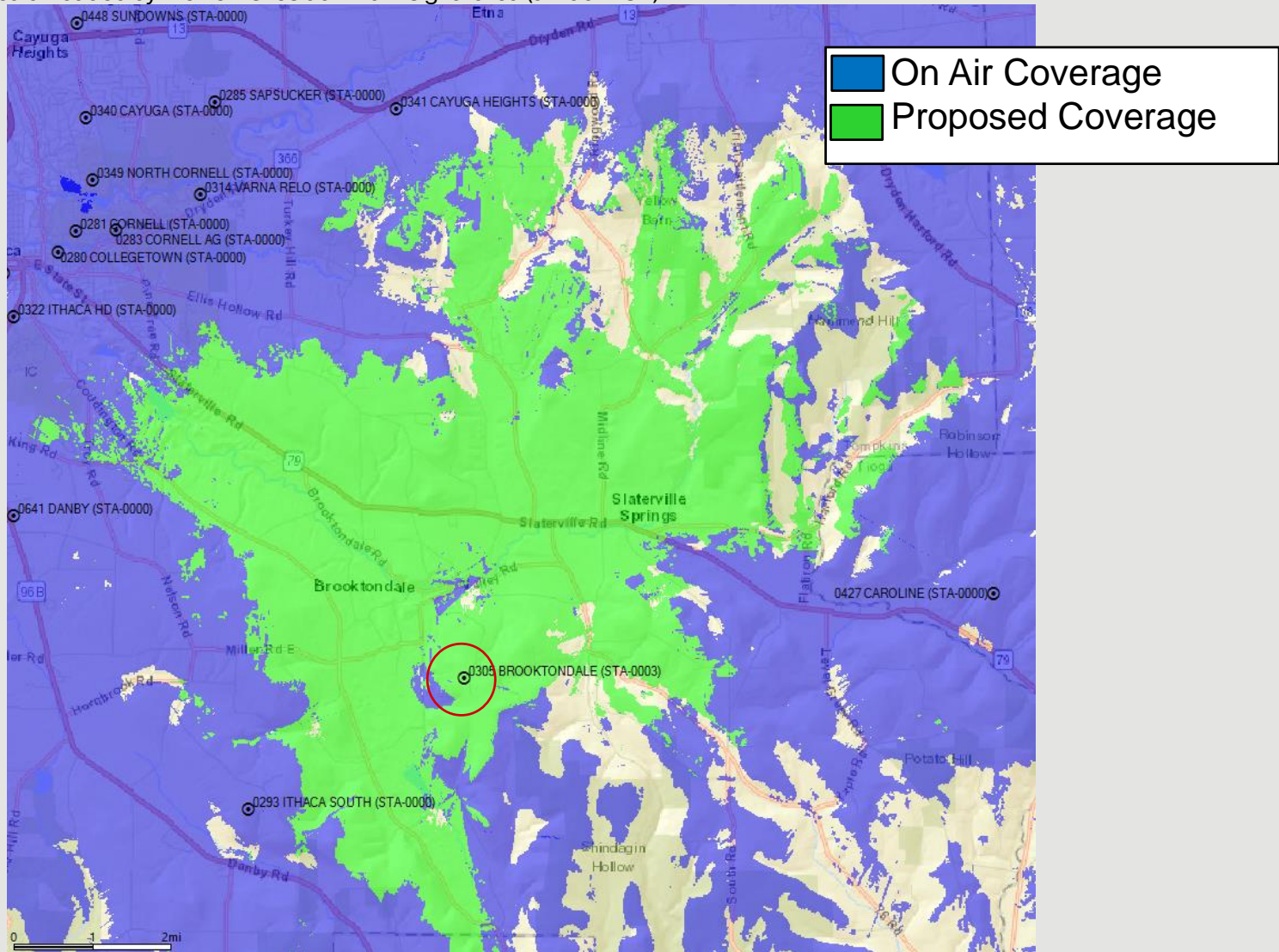
Existing 700MHz Best Server -105dBm RSRP

Best Server plots depict the actual footprint of each sector in question at one threshold so the viewer can accurately evaluate the area offloaded by the new sites dominant signal area.



Proposed 700MHz Best Server -105dBm RSRP

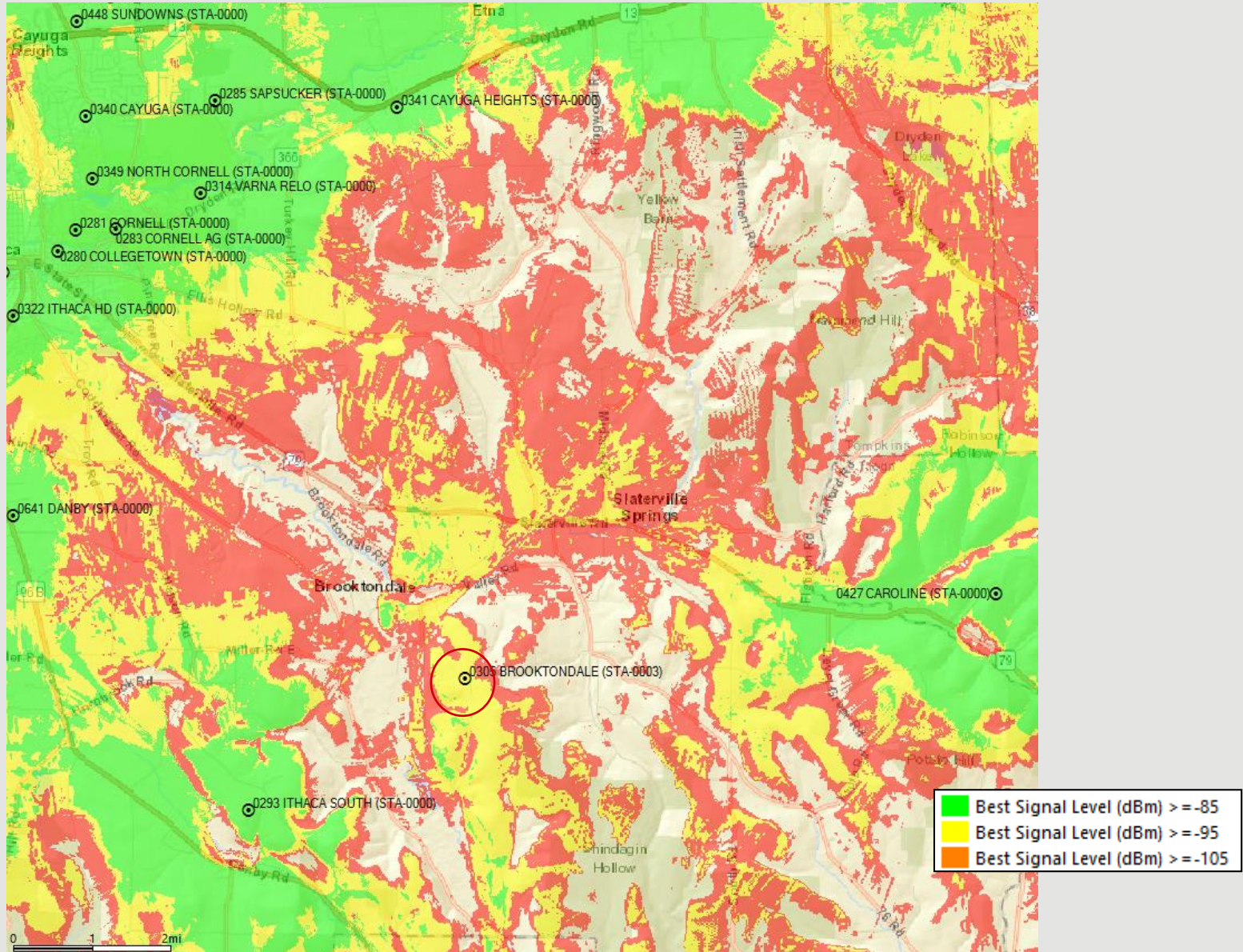
Best Server plots depict the actual footprint of each sector in question at one threshold so the viewer can accurately evaluate the area offloaded by the new sites dominant signal area (at 160' ACL).



The map above adds the footprint of the proposed Brooktondale site in green. The green best server footprint provides improved coverage and capacity throughout the area.

Existing 700MHz Coverage

This coverage map shows how weak the RF conditions are in and around the Brooktondale site area.



Proposed 700MHz Coverage

This coverage map shows how improved the RF conditions will be in and around the Brooktondale site area (at 160' ACL).

